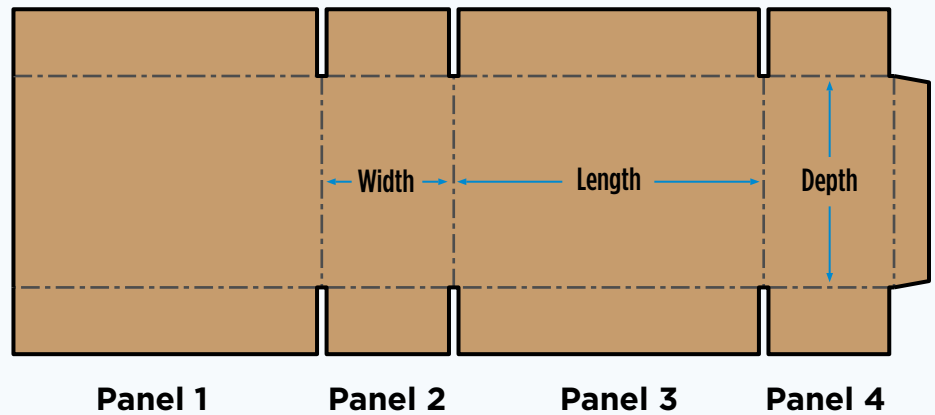


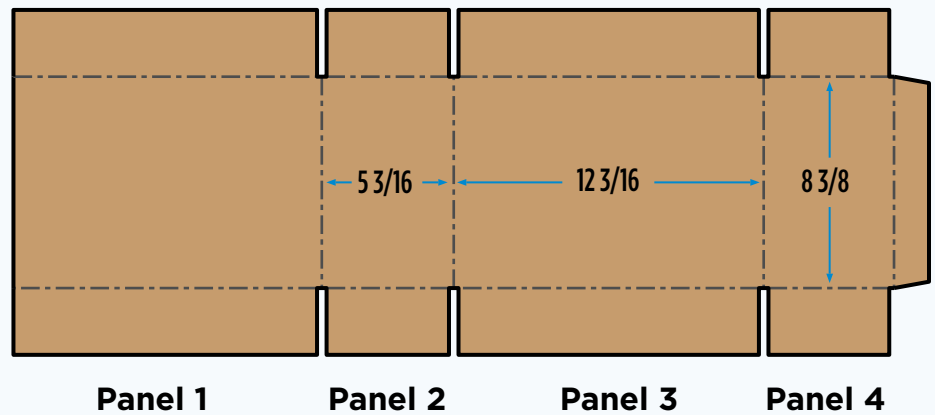
# How to Measure a Corrugated Box

Carefully remove the tape, stitches, or separate the glue flap. Lay the box flat with the inside liner facing up. The un-joined box should look like the illustration below.

The box measurements should be taken on panels 2 and 3. Take a pen and mark the exact center of the scores and measure the distance between marks to the nearest sixteenth of an inch. This is NOT the inside dimension of the box. Subtract from this the "Score Allowances" as follows:



To the right is an example of an RSC container 12 x 5 x 8 measured center of score to center of score.



## RSC SCORE ALLOWANCES (C Flute)

Dimension	Subtract
Length	3/16
Width	3/16
Depth	3/8

## ALLOWANCES FOR RSC BOXES

FLUTE	L	W	D
E	1/16"	1/16"	1/8"
B	1/8"	1/8"	1/4"
C	3/16"	3/16"	3/8"
EB	3/16"	3/16"	3/8"
BC	1/4"	1/4"	1/2"
AC	3/8"	3/8"	3/4"
TW	1/2"	1/2"	1"