

Carrier Options

Flat Carriers

- Available for standard, slim & sleek cans, & aluminum bottles
- 4-pack & 6-pack formats
- Sealed with a recyclable water-based barrier coating for moisture resistance
- Maximizes brand recognition & minimizes packaging waste

C-Clip Carriers

- Available for standard, slim & sleek cans, & aluminum bottles
- 4-pack & 6-pack formats
- Sealed with a recyclable water-based barrier coating for moisture resistance
- Provides extra support for larger cans in all climates

STANDARD 202/211 Cans

- 4 & 6 Pack C-Clip
(various spine widths)

SLEEK 202/204 Cans

- 4 & 6 Pack C-Clip
(various spine widths)

SLIM 200/202 Cans

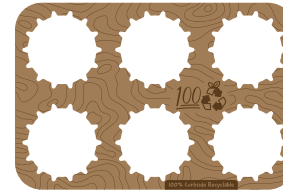
- 4 & 6 Pack C-Clip
(various spine widths)

ALUMINUM BOTTLES

- 4 & 6 Pack Flat
- 4 & 6 Pack C-Clip
(various spine widths)

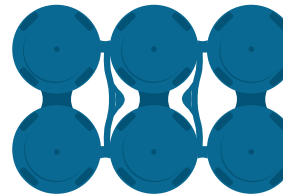


Why Choose Fishbone?



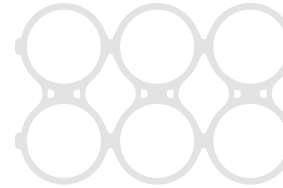
FISHBONE

- ✓ Curbside Recyclable
- ✓ Plastic-Free
- ✓ Branding Opportunity
- ✓ Environmentally Friendly



PAKTECH

- ✗ Curbside Recyclable
- ✗ Plastic-Free
- ✗ Branding Opportunity
- ✗ Environmentally Friendly



HI-CONE

- ✗ Curbside Recyclable
- ✗ Plastic-Free
- ✗ Branding Opportunity
- ✗ Environmentally Friendly

Plastic pollution is the biggest & most pervasive problem harming our ocean environment.

YOU can make a difference.



FISHBONE
BY ATLANTIC PACKAGING



| www.fishbone.com



ELIMINATE
SINGLE USE PLASTIC



What is Fishbone?

Plastic pollution is the biggest and most pervasive problem harming our ocean environment. Brands are working hard to **make a difference by taking action to use less plastic.**

Fishbone Carriers offer a completely plastic-free alternative to 6-pack and 4-pack plastic rings. It's simple design uses only minimal resources while also giving you billboarding space for your brand and marketing.

In addition to the can carriers, we've designed the **Fishbone application equipment** with new, innovative designs that accomodate varying production levels to make your operation run smoothly.

Depending on your specific needs, we offer a variety of equipment options to help you **maximize efficiency and performance.** These options range from high speed, fully automatic, to handheld applicators, which require no additional air or power.

Equipment Options

MACHINE MODEL	UP TO CPM	MACHINE TYPE	APPLIES C-CLIP	6 PACK	4 PACK	STANDARD (12 & 16oz)	SLIM SLEEK (Requires Glue)	OTHER CANS (Call for Details)
Snapper	36	Manual	✓	✓	✓	✓	✓ (Glue not Required)	✓
BCF25	150	Semi/Fully Automatic	✓	✓	✓	✓	✓	✓
BCF100C	600	Cont. Motion Automatic	✓	✓	✓	✗	✓	✓
BCF200C	1200	Cont. Motion Automatic	✓	✓	✓	✗	✓	✓
BCF300C	1800	Cont. Motion Automatic	✓	✓	✓	✗	✓	✓



BCF100

Handheld applicator;
no air or power required



BCF100

Fully automated or semi-automatic;
runs up to 150 cans/min



BCF100

Fully automatic, high speed applicator;
runs up to 600 cans/min

Our Team



Wes Carter
President, Atlantic Packaging
Founder, A New Earth Project
wesc@atlanticpkg.com



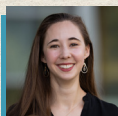
Chad Fields
Sales & Product Development
chadf@atlanticpkg.com



Chip Bennett
VP, Engineering & Automation
chipb@atlanticpkg.com



Allison Scales
VP, Printing & Graphics
allisons@atlanticpkg.com



Caroline DeLoach
Director of Sustainability
carolined@atlanticpkg.com



Kyle Pischel
Packaging Solution Center
kylep@atlanticpkg.com